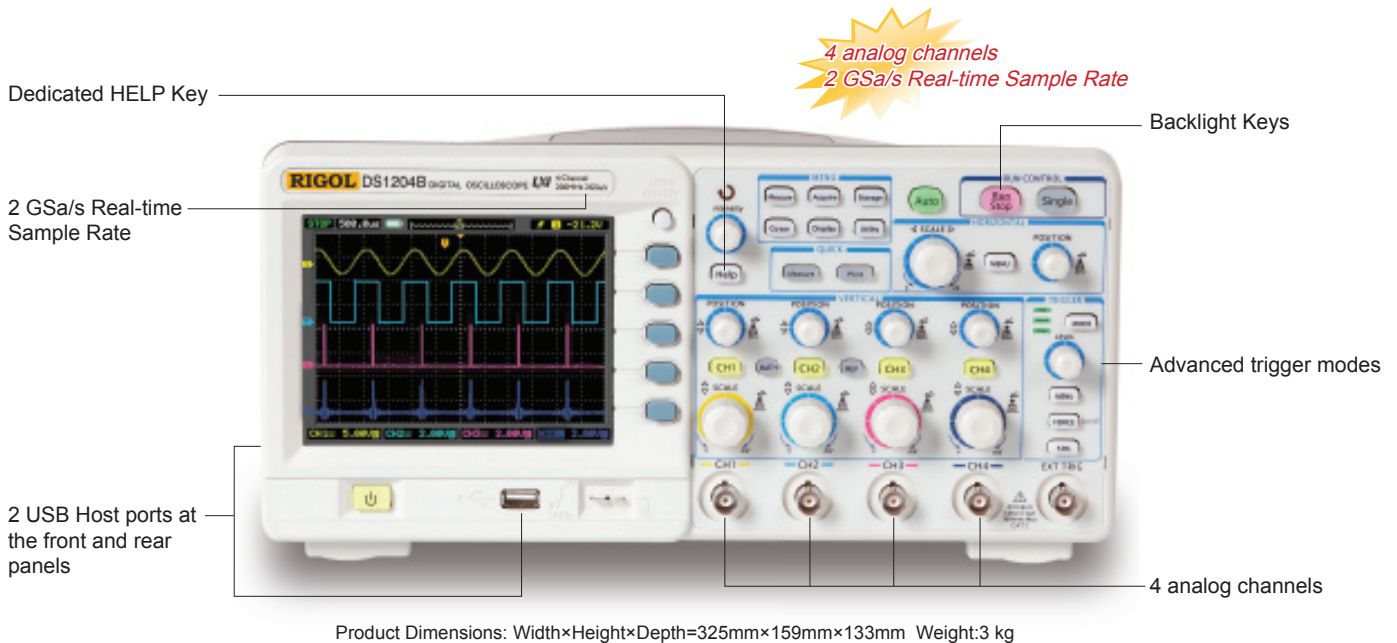


# DS1000B Series LXI Class C Compliant Digital Oscilloscope



## ► Application Areas

- Design and Debug
- Manufacturing
- Quality Control
- Service and Repair
- Education and Research

## ► Features and Benefits

1. 4 analog channels
2. 2 GSa/s Real-time Sample Rate and 50 GSa/s Equivalent-time Sample Rate
3. Compact design with small footprint to save bench space
4. 5.7" TFT QVGA (320×240) with 64K color LED backlight display with power save mode
5. Advanced trigger modes including Edge, Video, Pulse Width, Alternate and Pattern trigger across 4 analog channels
6. Built-in USB Host and USB Device to support USB flash drive, PictBridge printers and direct system upgrades
7. LXI Class C certified LAN Ethernet connectivity standard

Model	DS1204B	DS1104B	DS1064B
Bandwidth	200 MHz	100 MHz	60 MHz

## ► Specifications

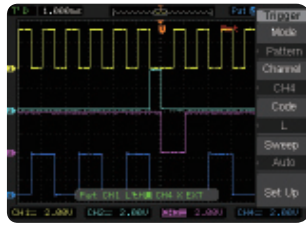
Model	DS1204B	DS1104B	DS1064B
Bandwidth	200 MHz	100 MHz	60 MHz
Memory Depth	16 kpts (half channel), 8 kpts (each channel)		
Channels	4 channels + external trigger		
Real-time Sample Rate	2 GSa/s (half channel), 1 GSa/s (each channel)		
Equivalent-time Sample Rate	50 GSa/s	25 GSa/s	10 GSa/s
Rise Time	1.8 ns	3.5 ns	5.8 ns
Input Impedance	1 MΩ    18 pF		
Timebase Range	1 ns/div ~ 50 s/div	2 ns/div ~ 50 s/div	5 ns/div ~ 50 s/div
Trigger modes	Edge, Video, Pulse Width, Alternate, pattern trigger across 4 analog channels		
Vertical Sensitivity	2 mV/div ~ 10 V/div		

Vertical Resolution	8 bits
Maximum Input Voltage	All Inputs 1MΩ 18pF 300Vrms Max CAT I
Cursor Measurement	Manual, Track and Auto Measure modes
Math	+, -, ×, FFT
Internal Storage	10 waveforms, 10 setups
USB Storage	8 bits BMP, 24 bits BMP, PNG, CSV, Waveforms and Setups against USB flash drive's limit
Connectivity	USB Device, dual USB Host, LXI-C compliant LAN
Display	5.7" TFT QVGA (320×240) with 64K color LED backlight display
Power Supply	AC: 100-127 V, 45Hz - 440Hz; 100 - 240V, 45Hz - 65Hz. 60VA Max

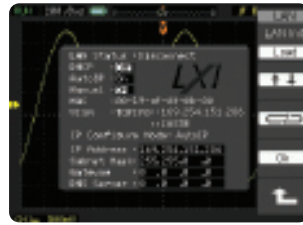
### ► Advanced Performance



4 analog signal input channels makes multi-channel signals test easy



**Pattern Trigger**  
Triggers on any combination of events across all 4 analog channels



LXI Class C compliant



PictBridge Certified

### ► Intuitive User Interface and Front Panel Design



**Independent Channel Control**  
4 analog channels with independent vertical control



**Built-in Help System**  
Dedicated Help button to access Built-in help system



**Auto Measure Button**  
To turn on selected general measurements directly

**Direct Print Button**  
To directly print the screen or save the waveforms locally or to the USB flash drive via USB Host port



**Easy Select Trigger Mode**  
To easily switch the trigger modes